



Nrl Polyclonal Antibody

Catalog No	YP-Ab-01920
Isotype	IgG
Reactivity	Human;Mouse
Applications	WB;ELISA
Gene Name	NRL
Protein Name	Neural retina-specific leucine zipper protein
Immunogen	The antiserum was produced against synthesized peptide derived from human NRL. AA range:19-68
Specificity	Nrl Polyclonal Antibody detects endogenous levels of Nrl protein.
Formulation	Liquid in PBS containing 50% glycerol, 0.5% BSA and 0.02% sodium azide.
Source	Polyclonal, Rabbit,IgG
Purification	The antibody was affinity-purified from rabbit antiserum by affinity-chromatography using epitope-specific immunogen.
Dilution	Western Blot: 1/500 - 1/2000. ELISA: 1/10000. Not yet tested in other applications.
Concentration	1 mg/ml
Purity	≥90%
Storage Stability	-20°C/1 year
Synonyms	NRL; D14S46E; Neural retina-specific leucine zipper protein; NRL
Observed Band	25kD
Cell Pathway	Cytoplasm . Nucleus .
Tissue Specificity	Expressed in the brain and the retina (PubMed:11477108). Expressed strongly in rod and cone cells (at protein level) (PubMed:11477108).
Function	disease:Defects in NRL are the cause of retinitis pigmentosa type 27 (RP27) [MIM:162080]. RP leads to degeneration of retinal photoreceptor cells. Patients typically have night vision blindness and loss of midperipheral visual field. As their condition progresses, they lose their far peripheral visual field and eventually central vision as well. RP27 inheritance is autosomal dominant.,function:Transcription factor which regulates the expression of several rod-specific genes, including RHO and PDE6B.,online information:Retina International's Scientific Newsletter,similarity:Belongs to the bZIP family.,similarity:Contains 1 bZIP domain.,subunit:Interacts with FIZ1. This interaction represses transactivation.,tissue specificity:Neural retina.,
Background	This gene encodes a basic motif-leucine zipper transcription factor of the Maf subfamily. The encoded protein is conserved among vertebrates and is a critical intrinsic regulator of photoreceptor development and function. Mutations in this gene have been associated with retinitis pigmentosa and retinal degenerative diseases.



[provided by RefSeq, Jul 2008],

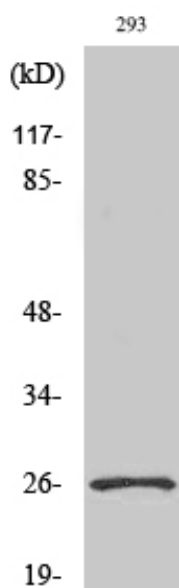
matters needing attention

Avoid repeated freezing and thawing!

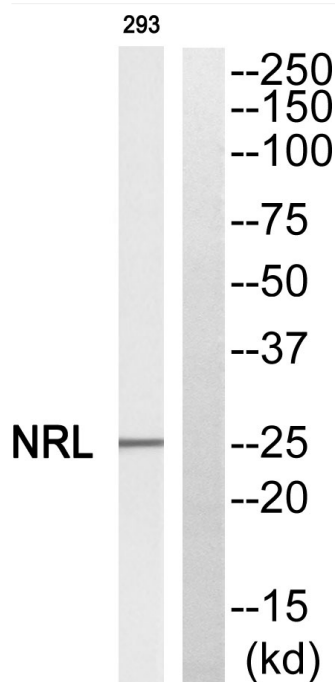
Usage suggestions

This product can be used in immunological reaction related experiments. For more information, please consult technical personnel.

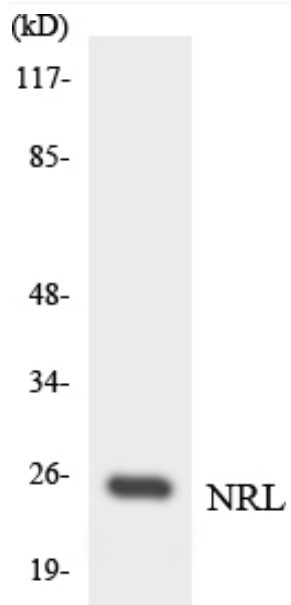
Products Images



Western Blot analysis of various cells using Nrl Polyclonal Antibody cells nucleus extracted by Minute TM Cytoplasmic and Nuclear Fractionation kit (SC-003, Invent biotech, MN, USA).



Western blot analysis of NRL Antibody. The lane on the right is blocked with the NRL peptide.



Western blot analysis of the lysates from HUVECcells using NRL antibody.